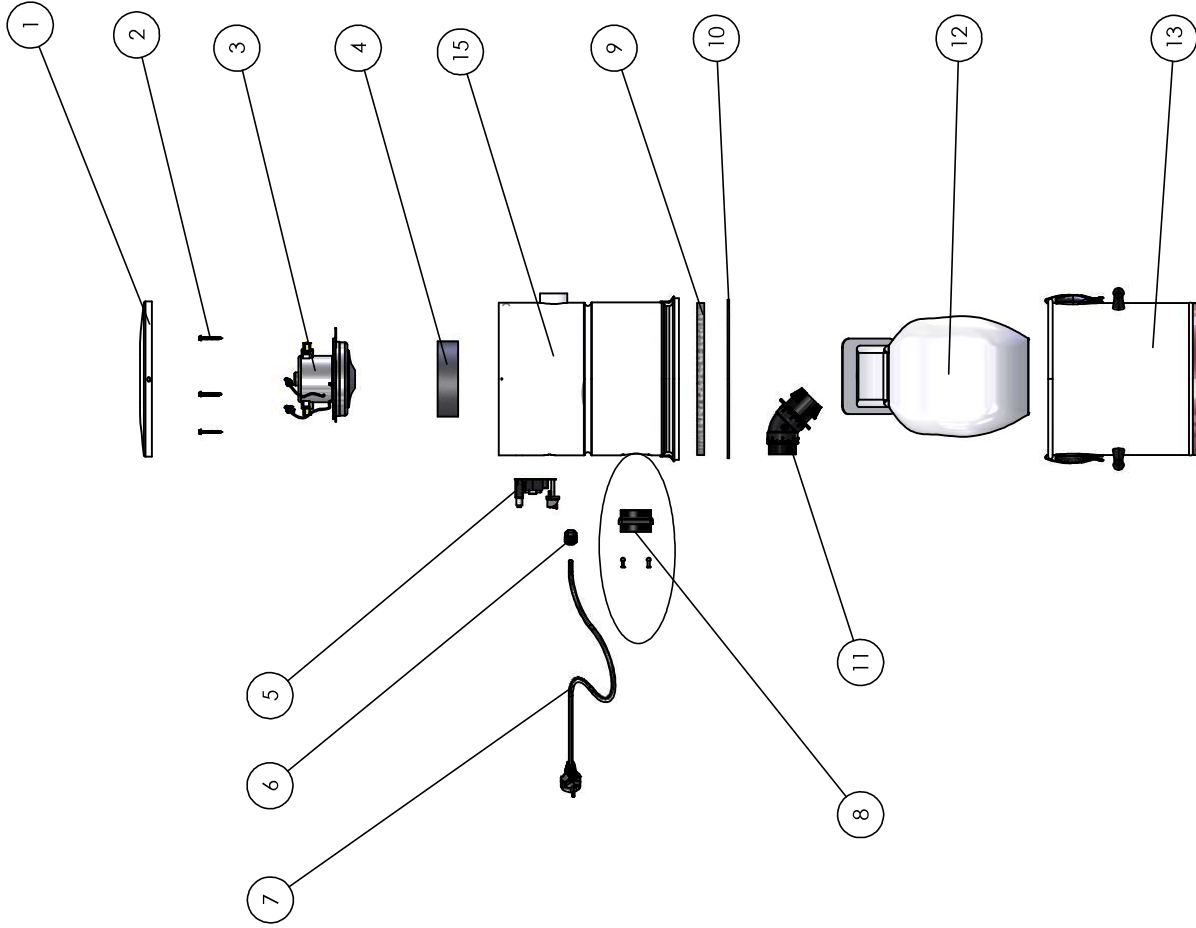


# V50 - 120V ASUPERV50A



NO	PartNo	DESCRIPTION
1	FCOUV10WGK	Couvercle inférieur
2	QUIVIS21	VIS hexagonal #8 1-1/2" + Rondelle caoutchou
3	FMTFD35401	MOTEUR DOMEL 354 + fixation
4	GASCUTT19	Gaske 5-1/2" x 2 x 1-1/2"
5	ELECIR901V	Circuit Electr. 120v 15A
6	ELECOR02	Clip de retenue cordon électrique
7	ELECOR01	Corde électrique 120V
8	REPINTKIT	Kit entrée air condo
9	GASMOU956	Mousse fond
10	GASLIN716	Gasket 1/8 X 7/16 (Pied)
11	FADASC13	Adaptateur sac
12	TDSACN03	Sac Allerx court/condo
13	FBAR109W01	Baril Cyclo court
14	NSUPP02W	Support mural
15	FCOR107W01	Corps DV30